

FLOAT & THERMOSTATIC TRAPS – PARALLEL SERIES

MATERIALS

Part	Description
Head	Cast Iron, ASTM-A278 Class 30
Body	Cast Iron, ASTM-A278 Class 30
Bolting	Steel, Grade 5
Gaskets	Non-Asbestos Fiber
Float	Stainless Steel
Plug	Stainless Steel
Seat	Brass, 15#, Stainless Steel 30#, 75#, 125#

CAPACITIES (SHEMA)

Lbs. condensate per hour.

Pipe	Model No.	Pressure Differential (PSIG)						
		1/4	1/2	1	2	5	10	15
1/2"	FTI 215	70	100	140	200	210	220	230
3/4"	FT 315, FTI 315	70	100	140	200	210	220	230
1"	FT 415, FTI 415	175	250	350	500	525	550	575
1 1/4"	FT 515, FTI 515	425	600	850	1200	1260	1320	1380
1 1/2"	FT 615, FTI 615	850	1200	1700	2400	2520	2640	2760
2"	FT815	1775	2500	3550	5000	5250	5500	5750

Note on capacity: Low pressure F&T trap capacities are in accordance with a standard adopted by the Steam Heating Manufacturers' Association (SHEMA) providing for the continuous elimination of air when the trap is operating at its maximum rating. No safety factor need be applied. Actual capacities are significantly greater than the SHEMA rating indicate.



VAC – 125 PSIG

CAPACITIES (GROSS)
Lbs. condensate per hour.

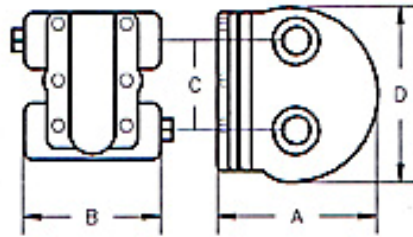
Pipe Size	Model No.	Pressure Differential (PSIG)														
		1/4	1/2	1	2	5	10	15	20	25	30	40	50	75	100	125
1/2" – 1"	FTI 215, 315, 415	293	387	513	683	824	1050	1129	-	-	-	-	-	-	-	-
3/4" – 1"	FT 315, 415	293	387	513	683	824	1050	1129	-	-	-	-	-	-	-	-
1 1/4"	FT 515	630	808	1029	1302	1722	2100	2457	-	-	-	-	-	-	-	-
1 1/2"	FT 615	1115	1785	2520	3465	5250	6930	7980	-	-	-	-	-	-	-	-
2"	FT 815	2415	2940	3780	4883	7245	9450	11445	-	-	-	-	-	-	-	-
1/2" – 1"	FTI 230, 330, 430	293	387	513	683	824	1050	1129	1271	1365	1439	-	-	-	-	-
3/4" – 1"	FT 330, 430	293	387	513	683	824	1050	1129	1271	1365	1439	-	-	-	-	-
1 1/4"	FT 530	394	525	725	956	1260	1575	1764	1890	1995	2100	-	-	-	-	-
1 1/2"	FT 630	1050	1365	1785	2415	3570	4830	5775	6300	6930	7350	-	-	-	-	-
2"	FT 830	1365	1890	2625	3570	5460	7140	8190	9030	9765	10500	-	-	-	-	-
1/2" – 1"	FTI 275, 375, 475	168	224	294	383	546	735	835	919	977	1019	1176	1292	1523	-	-
3/4" – 1"	FT 375, 475	168	224	294	383	546	735	835	919	977	1019	1176	1292	1523	-	-
1 1/4"	FT 575	410	578	667	956	1397	1943	2258	2520	2730	2940	3203	3465	3990	-	-
1 1/2"	FT 675	557	761	1008	1365	1995	2783	3203	3570	3885	4200	4620	4988	5670	-	-
2"	FT 875	893	1155	1575	2100	3255	4358	4987	5460	5775	6090	6720	7140	8085	-	-
1/2" – 1"	FTI 2125, 3125, 4125	105	142	184	242	347	436	525	593	651	698	788	872	1019	1166	1249
3/4" – 1"	FT 3125, 4125	105	142	184	242	347	436	525	593	651	698	788	872	1019	1166	1249
1 1/4"	FT 5125	294	389	504	662	956	1260	1523	1733	1864	1995	2179	2363	2783	3098	3308
1 1/2"	FT 6125	420	546	714	935	1365	1785	2153	2415	2625	2835	3150	3360	3990	4410	4725
2"	FT 8125	578	709	924	1286	2048	2730	3150	3413	3675	3990	4410	4850	5775	6430	6930

Note on Capacity: Trap capacities are based on continuous discharge at steam temperature. The published figures are the result of an extensive testing program Conducted in accordance with ANSI/ASME PTC 39.1–1980, Condensate Removal Device for Steam Systems, at the factory. Significantly greater capacities Are realized when condensate temperature is below saturated steam temperature. Appropriate safety factors should be applied to these ratings.

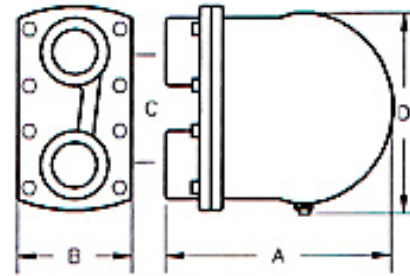
NOTE: FLOAT TRAPS are available for those applications where draining liquids is the only requirement of the trap. In those instances the thermostatic air vent is replaced by a solid plug. To order, use the previous model number with the prefix "FI" instead of "FTI". All pipe sizes and pressure ratings are available.

DIMMENSIONS

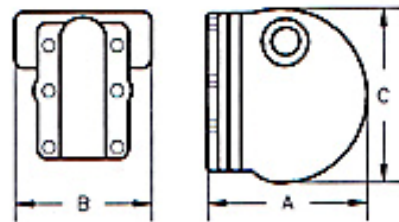
Size	Models	A	B	C	D	WT.
3/4"	FT 315, 330, 375, 3125	5 11/16"	5"	3 5/16"	5 5/8"	11 lbs
1"	FT 415, 430, 475, 4125	5 11/16"	5"	3 5/16"	5 5/8"	11lbs
1 1/4"	FT515, 530	6 1/8"	5 1/2"	3"	5 3/8"	12 lbs
1 1/4" - 1 1/2"	FT 615, 630, 575, 5125, 6125	8 1/4"	6"	3"	8 1/4"	24 lbs
2"	FT 815, 830, 875, 8125	10"	4 7/8"	4 7/8"	9 1/4"	22 lbs
1/2" - 1"	FTI (ALL)	5"	6 1/4"	6 1/2"	-	11 lbs



FT 3/4" - 1 1/2"



FT 2"



FTI 1/2" - 1"